



Super Slide™ (Standard Type) RS**1 Series

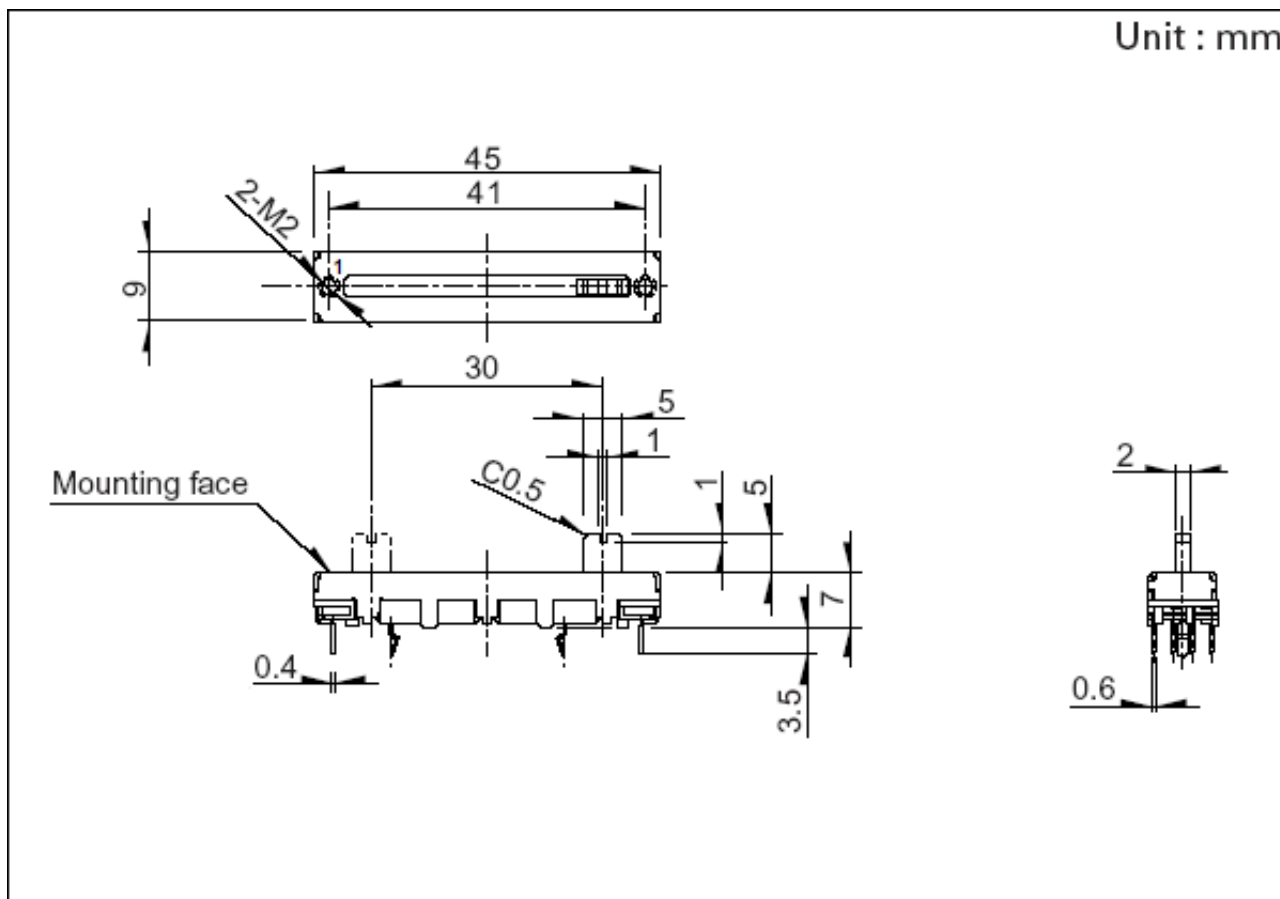
Insulated lever

Part number		RS30112AJA02
Number of resistor elements		Dual-unit
Direction of lever		Vertical
Travel		30mm
Lever type		J-1
Length of lever		5mm
Total resistance		10kΩ
Resistance taper		3B
Detent		Without
Mounting plate		With
Operating temperature range		-25°C to +70°C
Electrical performance	Total resistance tolerance	±20%
	Maximum operating voltage	200V AC, 10V DC
	Rated power	0.1W
	Insulation resistance	100MΩ min. 250V DC
	Voltage proof	300V AC for 1 minute
Mechanical performance	Operating force	0.3 to 2.5N
	Stopper strength	50N
	Lever push-pull strength	50N
	Lever wobble (Both side)	1mm

Lever deviation (One side) 0.5mm max.

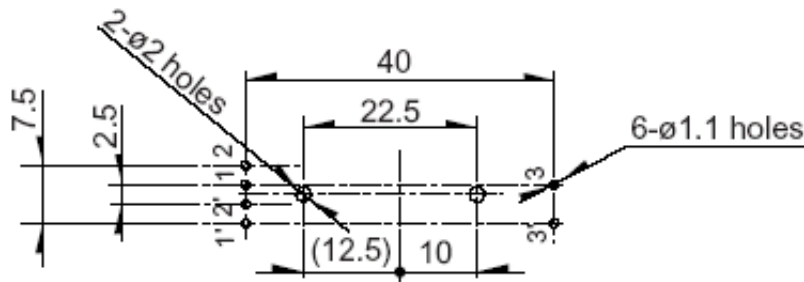
Durability	Operating life	15,000 cycles
Minimum order unit (pcs.)	Japan	600
	Export	2,400

Dimensions



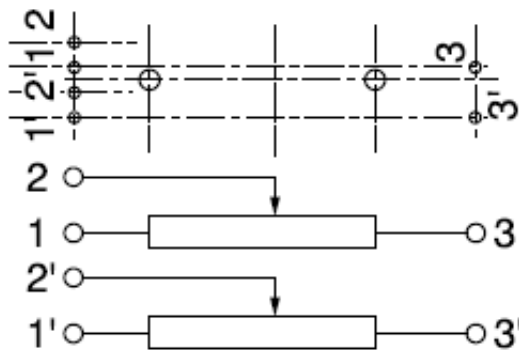
Mounting Hole Dimensions

Unit : mm



Viewed from mounting side.

Terminal Layout / Circuit Diagram



Packing Specifications

Tray

Number of packages 1 case / Japan 600
(pcs.)

1 case / export
packing

2,400

Export package measurements (mm) 378×518×422

Soldering Conditions

Reference for Dip Soldering

Preheating	Soldering surface temperature	100°C max.
	Heating time	1 min. max.
Dip soldering	Soldering temperature	260°C max.
	Soldering time	5s max.
No. of solders		1 time

Reference for Hand Soldering

Tip temperature	350°C max.
Soldering time	3s max.
No. of solders	1 time

Notes are common to this series/models.

1. This site catalog shows only outline specifications. When using the products, please obtain formal specifications for supply.
2. Please place purchase orders per minimum order unit (integer).
3. Products other than those listed in above products are also available. Please contact us for details.
4. "L" in the "Lever Wobble" column of the above table indicates the length of lever.
5. This products can be used in vehicles.
Although these products are designed to perform over a wide operating temperature range, please ensure that you receive and read the formal delivery specifications before use.