

DATA SHEET

SMS7630-061: Surface Mount, 0201 Zero Bias Silicon Schottky Detector Diode

Applications

- Sensitive RF and microwave detector circuits
- Sampling and mixer circuits
- High volume wireless systems
- WiFi and mobile devices
- Low-noise receivers for high sensitivity ID tags
- Radio designs

Features

- Extremely low barrier height
- Suitable for use above 26 GHz
- Low parasitic impedance: $C_p < 0.05$ pF, $L_s < 0.2$ nH
- Low profile, ultra-miniature 0201 SMT package rated MSL1, 260 °C per JEDEC J-STD-020



Skyworks Pb-free products are compliant with all applicable legislation. For additional information, refer to *Skyworks Definition of Lead (Pb)-Free*, document number SQ04-0073.



Description

The SMS7630-061 is a silicon, zero bias Schottky detector diode with an ultra-miniature 0201 footprint and very low barrier height. This P-type diode can be used for sensitive video detector circuits and sampling circuits.

The low barrier height results in good detector sensitivity without the need for external bias current. The low junction capacitance of this diode makes it an excellent detector at frequencies up to 26 GHz and higher.

A pinout diagram for the SMS7630-061 is shown in Figure 1.

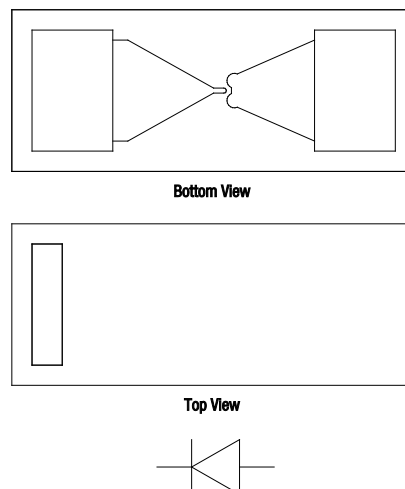


Figure 1. SMS7630-061 Pinout Diagram

Table 1. SMS7630-061 Series Absolute Maximum Ratings

Parameter	Symbol	Minimum	Maximum	Units
Reverse voltage	V_R		Minimum reverse breakdown voltage	V
Forward current	I_F		50	mA
Power dissipation	P_D		75	mW
Storage temperature	T_{STG}	-65	+200	°C
Operating temperature	T_A	-65	+150	°C

Note: Exposure to maximum rating conditions for extended periods may reduce device reliability. There is no damage to device with only one parameter set at the limit and all other parameters set at or below their nominal value. Exceeding any of the limits listed here may result in permanent damage to the device.



Attention: Observe Precautions for Handling Electrostatic Sensitive Devices

ESD Human Body Model (HBM) = 250 V (Class 1A)

ESD Machine Model (MM) = <30 V (Class A)

ESD Charged Device Model (CDM) = 1000 V (Class 4)

Electrostatic Discharge (ESD) can damage this device, which must be protected from ESD at all times. Static charges may easily produce potentials of several kilovolts on the human body or equipment, which can discharge without detection. Industry-standard ESD precautions should be used at all times.

Table 2. SMS7630-061 Electrical Specifications (Note 1)

($T_A = +25^\circ\text{C}$, Unless Otherwise Noted)

Parameter	Symbol	Test Condition	Min	Typical	Max	Units
Breakdown voltage	V_B	$I_R = 100\ \mu\text{A}$	1			V
Total capacitance	C_T	$V_R = 0.15\ \text{V}$, $f = 1\ \text{MHz}$		0.2		pF
Video resistance	R_V			5000		Ω
Series inductance	L_S			0.2		nH
Forward voltage	V_F	$I_F = 0.1\ \text{mA}$ $I_F = 1\ \text{mA}$	60 135	180	120 240	mV mV

Note 1: Performance is guaranteed only under the conditions listed in this Table.

Mixer and Detector Applications

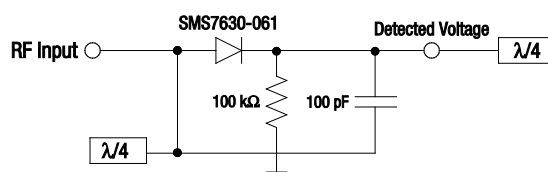
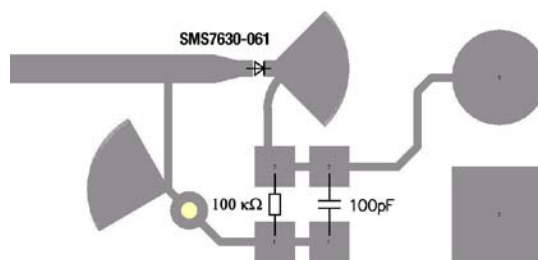
24 GHz Detector Design

A detector circuit that incorporates an SMS7630-061 Schottky diode and covers the 24 GHz band is shown in Figure 2. The RF arrives on a $50\ \Omega$ microstrip line from the left and is shorted to GND by a 90 degree line with a stud (GND arrives by a via).

The cathode of the diode is directly connected to a 24 GHz stub. This output is loaded by a $100\ \text{k}\Omega$ resistor and a $100\ \text{pF}$ capacitor. The output voltage is fed to a 2-pin, 2.54 mm header.

The circuit was built on a 0.254 mm Rogers RO-4350B substrate and measured with a power-variable 24 GHz source. A layout design is illustrated in Figure 3.

Input power versus detected voltage for this detector is shown in Figure 8.

**Figure 2. Schematic of a 24 GHz Detector Design****Figure 3. Layout for a 24 GHz Detector Design**

24 GHz Rat-Race Mixer

A rat-race mixer that uses two SMS7630-061 Schottky diodes is shown in Figure 4. The LO signal (24 GHz) is fed from the right side and reaches a rat-race ring. The diodes are positioned 90 degrees apart from the LO input and are terminated in a stub.

Both diodes are connected (using a 1206 resistor) and are loaded by a 470 Ω resistor and a 10 pF capacitor. This forms the IF output (10 MHz). The RF input (24.010 GHz) is directly connected to the rat-race ring. A layout design is illustrated in Figure 5.

The mixer has been tested with the following conditions:

LO frequency: 24 GHz

LO power: -4 to +6 dBm

RF frequency: 24.010 GHz

RF power: -30 dBm

Typical conversion loss data for this mixer is shown in Figure 9.

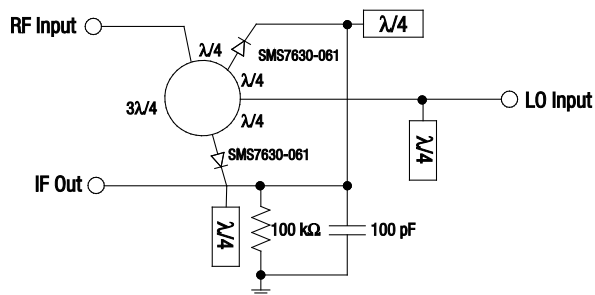


Figure 4. Schematic of a 24 GHz Rat-Race Mixer

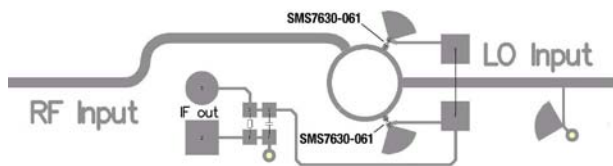


Figure 5. Layout for a 24 GHz Rat-Race Mixer

Electrical and Mechanical Specifications

The absolute maximum ratings of the SMS7630-061 are provided in Table 1. Electrical specifications are provided in Table 2. The associated SPICE model parameters are provided in Table 3.

Typical performance characteristics are shown in Figures 6 through 9. The PCB layout footprint for the SMS7630-061 is provided in Figure 10. Package dimensions are shown in Figure 11, and tape and reel dimensions are provided in Figure 12.

Package and Handling Information

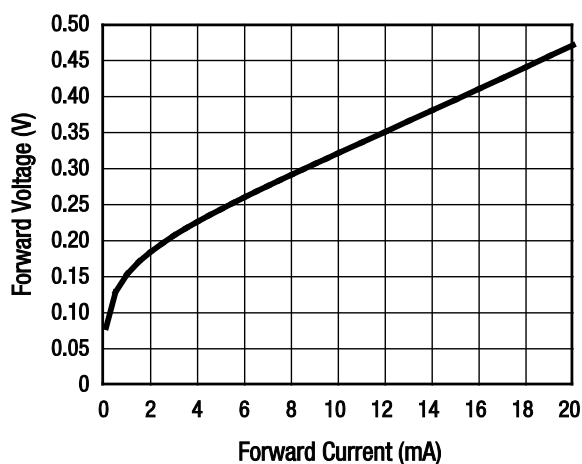
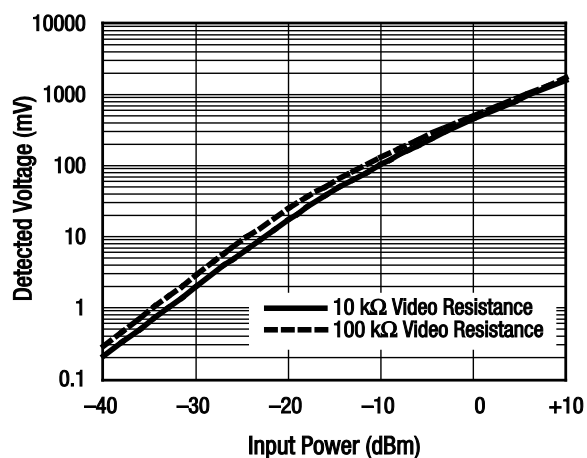
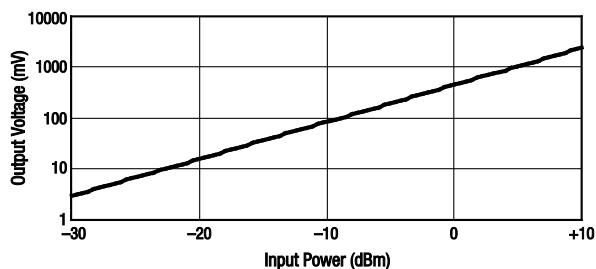
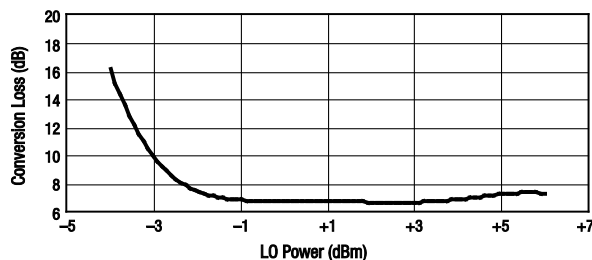
Instructions on the shipping container label regarding exposure to moisture after the container seal is broken must be followed. Otherwise, problems related to moisture absorption may occur when the part is subjected to high temperature during solder assembly.

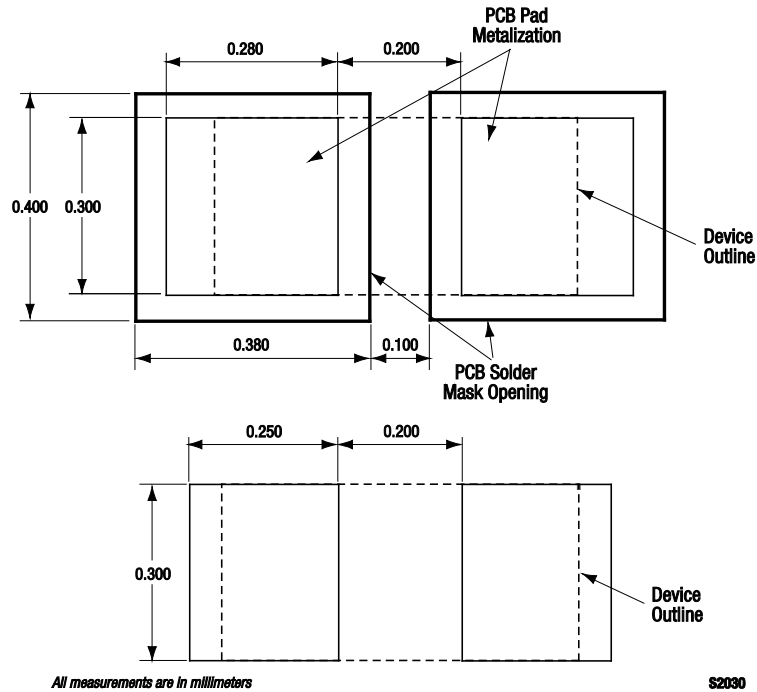
The SMS7630-061 is rated to Moisture Sensitivity Level 1 (MSL1) at 260 °C. It can be used for lead or lead-free soldering. For additional information, refer to the Skyworks Application Note, *Solder Reflow Information*, document number 200164.

Care must be taken when attaching this product, whether it is done manually or in a production solder reflow environment. Production quantities of this product are shipped in a standard tape and reel format.

Table 3. SPICE Model Parameters

Parameter	Units	SMS7630-061
I_s	A	5E-06
R_s	Ω	20
N	—	1.05
TT	sec	1E-11
C_{jo}	pF	0.14
M	—	0.4
E_g	eV	0.69
XTI	—	2
Fc	—	0.5
B_v	V	2
I_{bv}	A	1E-04
V_j	V	0.34

Typical Performance Characteristics @ 25 °C**Figure 6. Forward Voltage vs Forward Current****Figure 7. Detector Voltage vs Input Power****Figure 8. Output Voltage vs Input Power****Figure 9. Conversion Loss vs LO Power**



S2030

Figure 10. SMS7630-061 PCB Layout Footprint

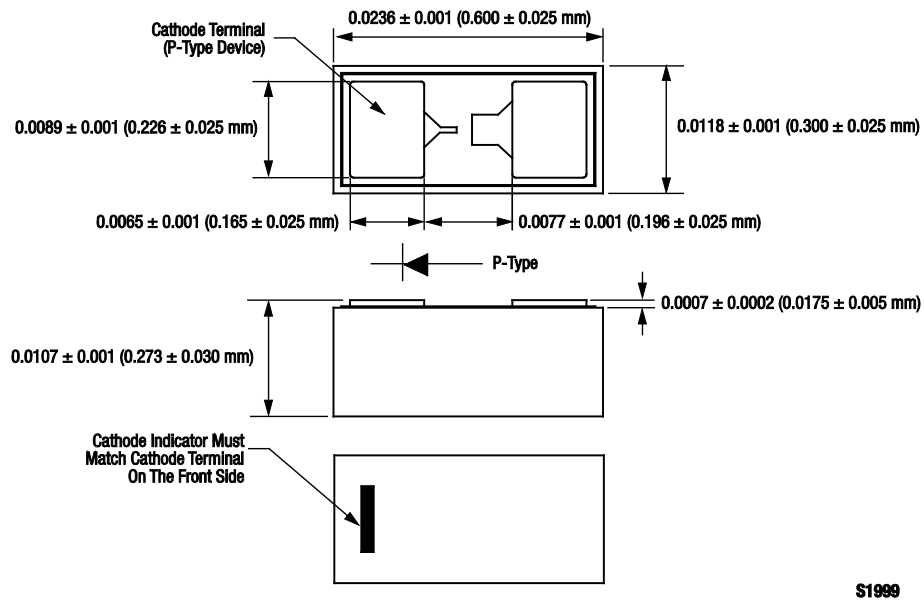
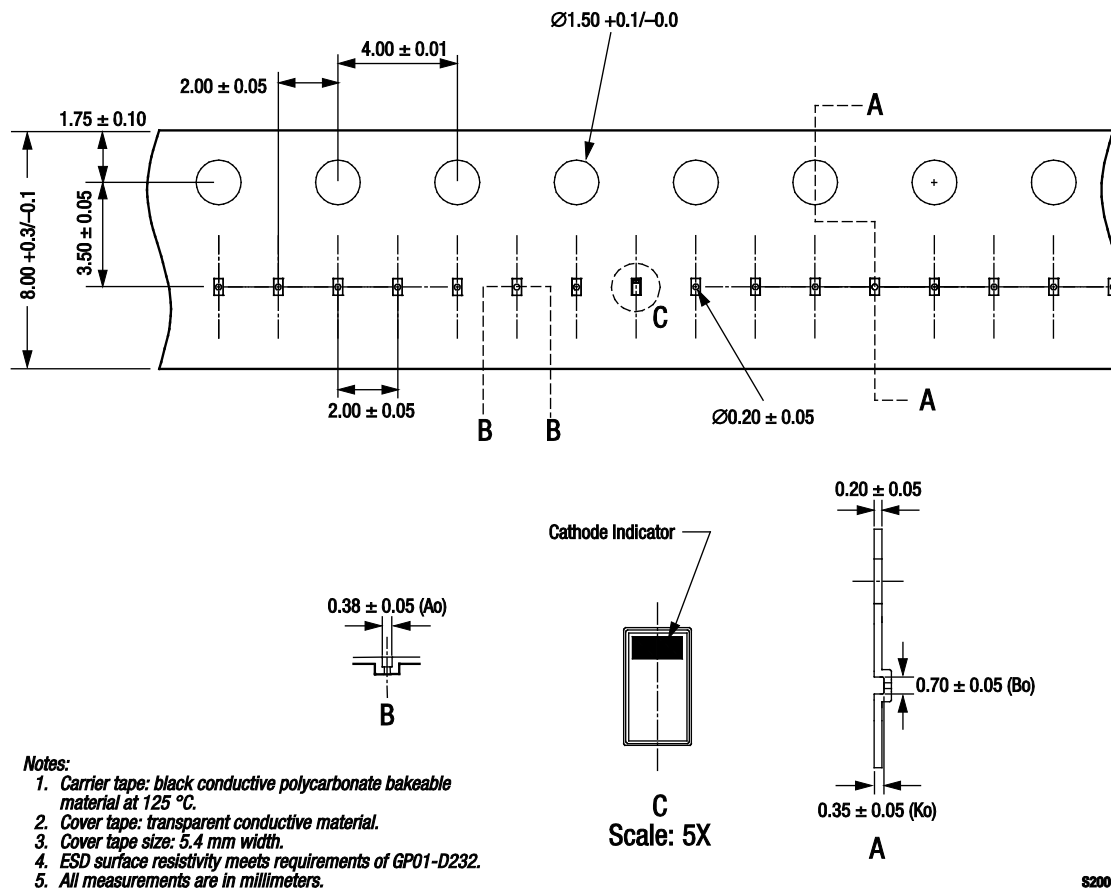


Figure 11. SMS7630-061 Package Dimension Drawing



Copyright © 2010, 2012 Skyworks Solutions, Inc. All Rights Reserved.

Information in this document is provided in connection with Skyworks Solutions, Inc. ("Skyworks") products or services. These materials, including the information contained herein, are provided by Skyworks as a service to its customers and may be used for informational purposes only by the customer. Skyworks assumes no responsibility for errors or omissions in these materials or the information contained herein. Skyworks may change its documentation, products, services, specifications or product descriptions at any time, without notice. Skyworks makes no commitment to update the materials or information and shall have no responsibility whatsoever for conflicts, incompatibilities, or other difficulties arising from any future changes.

No license, whether express, implied, by estoppel or otherwise, is granted to any intellectual property rights by this document. Skyworks assumes no liability for any materials, products or information provided hereunder, including the sale, distribution, reproduction or use of Skyworks products, information or materials, except as may be provided in Skyworks Terms and Conditions of Sale.

THE MATERIALS, PRODUCTS AND INFORMATION ARE PROVIDED "AS IS" WITHOUT WARRANTY OF ANY KIND, WHETHER EXPRESS, IMPLIED, STATUTORY, OR OTHERWISE, INCLUDING FITNESS FOR A PARTICULAR PURPOSE OR USE, MERCHANTABILITY, PERFORMANCE, QUALITY OR NON-INFRINGEMENT OF ANY INTELLECTUAL PROPERTY RIGHT; ALL SUCH WARRANTIES ARE HEREBY EXPRESSLY DISCLAIMED. SKYWORKS DOES NOT WARRANT THE ACCURACY OR COMPLETENESS OF THE INFORMATION, TEXT, GRAPHICS OR OTHER ITEMS CONTAINED WITHIN THESE MATERIALS. SKYWORKS SHALL NOT BE LIABLE FOR ANY DAMAGES, INCLUDING BUT NOT LIMITED TO ANY SPECIAL, INDIRECT, INCIDENTAL, STATUTORY, OR CONSEQUENTIAL DAMAGES, INCLUDING WITHOUT LIMITATION, LOST REVENUES OR LOST PROFITS THAT MAY RESULT FROM THE USE OF THE MATERIALS OR INFORMATION, WHETHER OR NOT THE RECIPIENT OF MATERIALS HAS BEEN ADVISED OF THE POSSIBILITY OF SUCH DAMAGE.

Skyworks products are not intended for use in medical, lifesaving or life-sustaining applications, or other equipment in which the failure of the Skyworks products could lead to personal injury, death, physical or environmental damage. Skyworks customers using or selling Skyworks products for use in such applications do so at their own risk and agree to fully indemnify Skyworks for any damages resulting from such improper use or sale.

Customers are responsible for their products and applications using Skyworks products, which may deviate from published specifications as a result of design defects, errors, or operation of products outside of published parameters or design specifications. Customers should include design and operating safeguards to minimize these and other risks. Skyworks assumes no liability for applications assistance, customer product design, or damage to any equipment resulting from the use of Skyworks products outside of stated published specifications or parameters.

Skyworks, the Skyworks symbol, and "Breakthrough Simplicity" are trademarks or registered trademarks of Skyworks Solutions, Inc., in the United States and other countries. Third-party brands and names are for identification purposes only, and are the property of their respective owners. Additional information, including relevant terms and conditions, posted at www.skyworksinc.com, are incorporated by reference.