

CC2530 Eval Kit4

Primary Attribute

Part Number CC2530 Eval Kit4

Manufacturer WaveShare

Remarks



Pricing

Price List (All prices are in US dollars)

Price Break	@ 1Unit	@ 2Units	@ 3Units	@ 4Units
Unit Price	41.99	39.89	38.29	37.09
Extended Price	41.99	79.78	114.87	148.36

Product Photos



ZigBee development/evaluation kit designed for CC2530F256

Overview

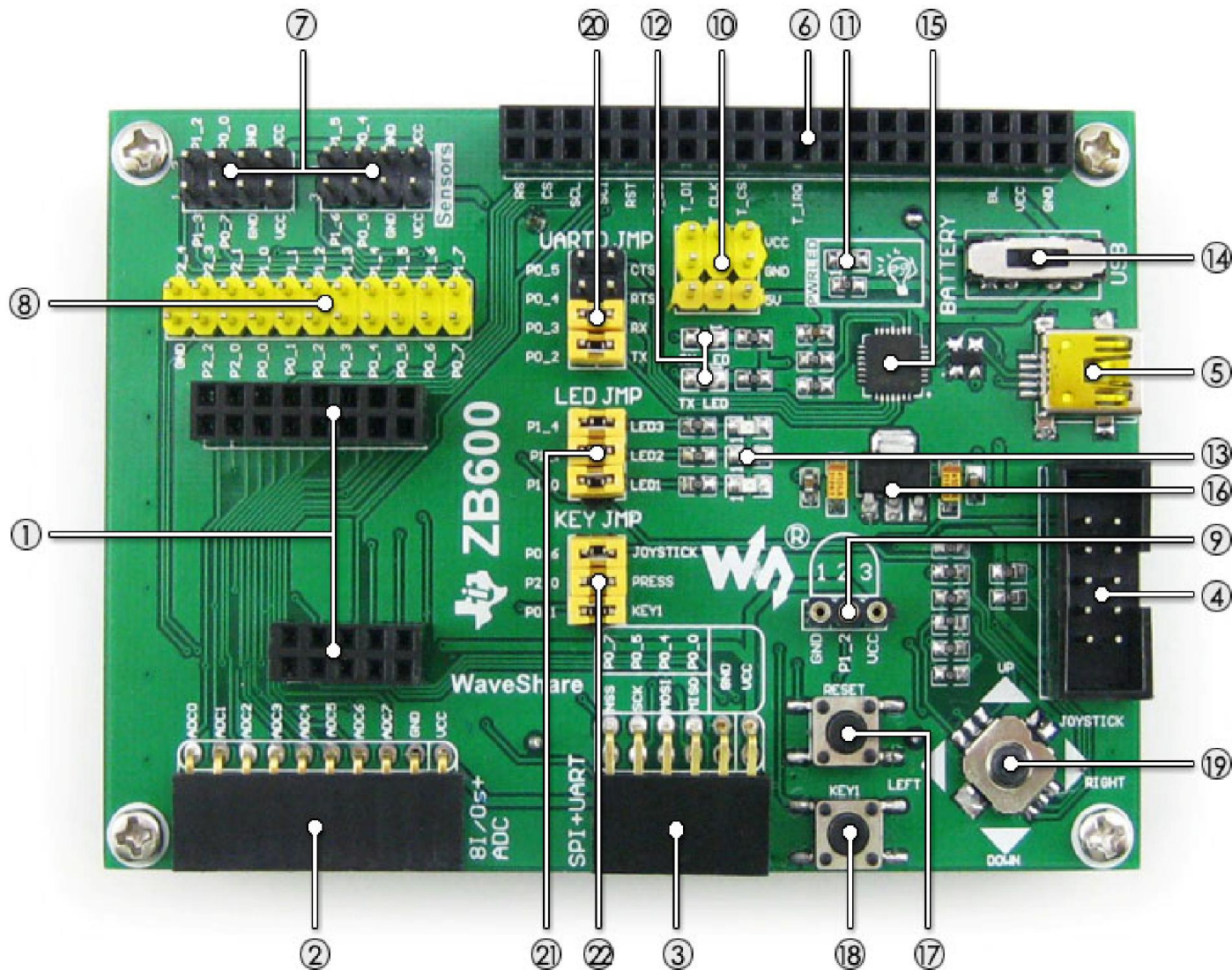
CC2530 Eval Kit4 is a ZigBee development/evaluation kit designed for CC2530F256, consists of the mother board **ZB600** and the ZigBee module **XCORE2530**. LCD and modules are also included.

ZB600 Features

- Onboard battery holder, multi power supplies are available

- All the IOs are accessible for easy expansion
- Integrates CP2102 for debugging
- LEDs and user keys
- Onboard sensor interface, supports connecting various sensors

What's on the ZB600



1. ZigBee module connector: for easily connecting ZigBee modules
2. 8I/Os+ADC interface
3. SPI+UART interface
4. Debugging interface
5. USB interface: USB to UART via the onboard convertor CP2102

6. LCD interface
 7. Sensor interface: for connecting sensors like Temperature sensor, Humidity sensor, Gas sensor, or Flame sensor, etc.
 8. MCU pins connector: all the MCU pins are accessible on expansion connectors for further expansion
 9. ONE-WIRE interface
 10. 5V/3.3V power input/output: usually used as power output, also common-grounding with other user board
 11. Power indicator
 12. Serial port RX/TX indicator
 13. User LEDs
 14. Power switch
 15. CP2102
 16. AMS1117-3.3
 17. Reset button
 18. User key
 19. Joystick: five positions
 20. UART0 jumper
 21. User LED jumper
 22. User key and Joystick jumper
-

XCore2530 Features

1. As easy to use as any UART modules
2. Preloaded Bootloader, supports programming via UART directly without any debugger
3. Provided firmware: Coordinator and/or Router(preloaded by default)
4. Supports configuring via upper computer software
5. Auto networking (at least 1 Coordinator and 1 Router are required)
6. Onboard power amplifier RXF2401, achieves farther communication distance

XCore2530 Specifications

1. Onboard chip: CC2530F256RHAR
2. Communication distance (open and wide operating environment):
 - Absolute maximum: over 1500 meters
 - Stable communication: over 1300 meters
 - Auto connecting: over 1000 meters
3. Frequency range: 2.4GHz
4. Wide supply-voltage range (2 V–3.6 V)
5. Operating temperature: -40°C ~ 85°C
6. Serial port baud rate: 38400bps (default), different baud rates are available by software configuration
7. Dimension: 26mm x 37mm (PCB)

8. Expansion pinheader: all the I/Os except P1_1, P1_4
9. Pinheader pitch: 2.54mm
10. Spacing between pinheaders on the left side and the right side: 22.86mm (9x2.54mm)
11. Antenna: 2.4G 2DB 360° omni-directional

CC2530F256RHAR Features

1. Frequency range: 2.4GHz
2. 16 transfer chains, software configurable according to environmental conditions
3. Radio baud rate up to 250kbps
4. High-Performance and Low-Power 8051 microcontroller core with code prefetch
5. 2.4-GHz IEEE 802.15.4 compliant RF transceiver
6. Wide supply-voltage range (2 V–3.6 V)
7. Watchdog timer, battery monitor, and temperature sensor
8. 12-Bit ADC with 8 channels and configurable resolution
9. 2 powerful USARTs with support for several serial protocols
10. IR generation circuitry
11. General-Purpose timers (One 16-Bit, Two 8-Bit)
12. AES security coprocessor
13. 21 General-Purpose I/O pins ($19 \times 4 \text{ mA}$, $2 \times 20 \text{ mA}$)