

CC2530 Eval Kit

Primary Attribute

Part Number CC2530 Eval Kit

Manufacturer WaveShare

Remarks



Pricing

Price List (All prices are in US dollars)

Price Break	@ 1Unit	@ 2Units	@ 3Units	@ 4Units
Unit Price	18.99	17.99	17.29	16.79
Extended Price	18.99	35.98	51.87	67.16

Product Photos



(Click on the image to enlarge)

ZigBee development/evaluation kit designed for CC2530F256

Overview

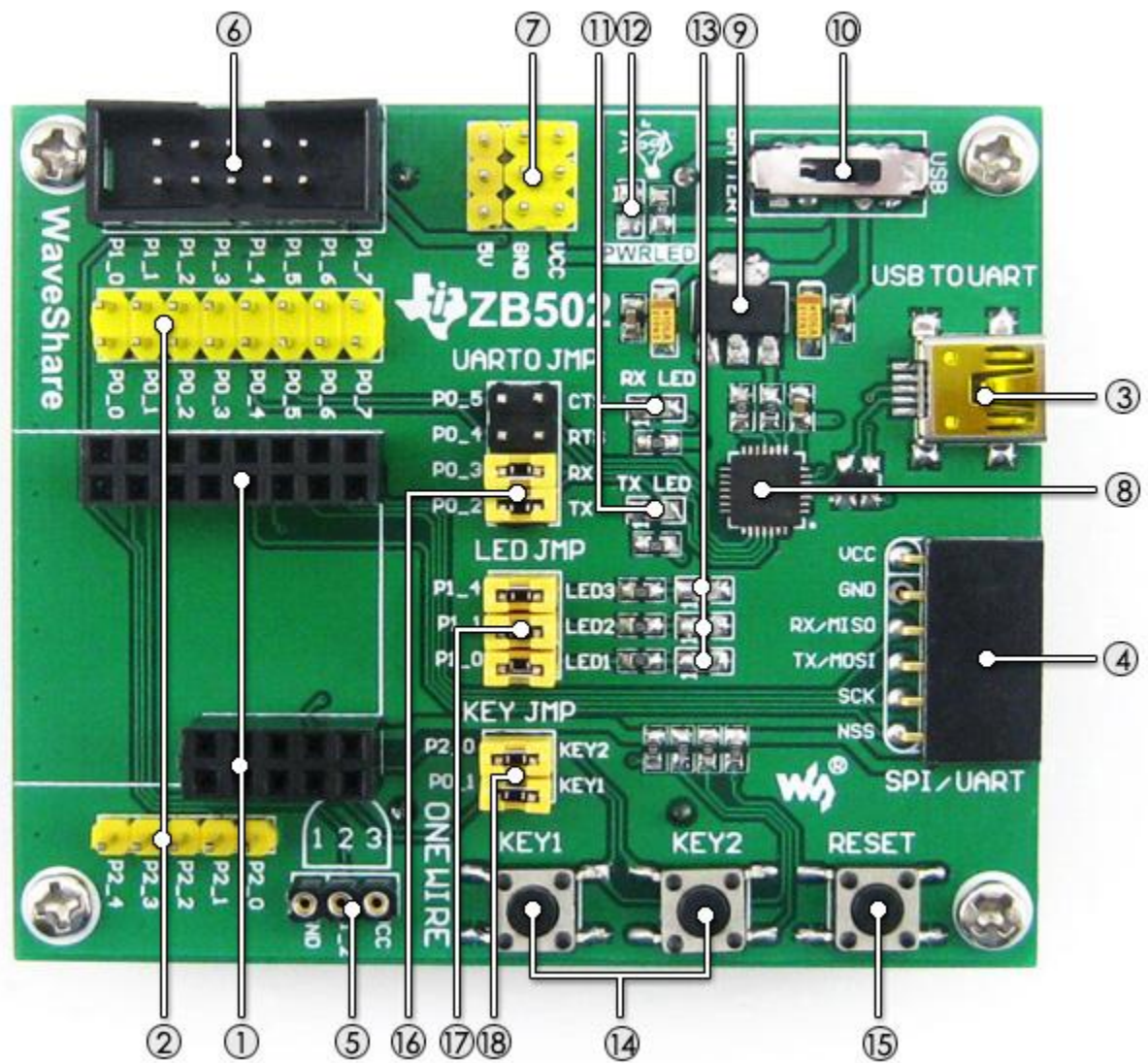
CC2530 Eval Kit is a ZigBee development/evaluation kit designed for CC2530F256, consists of the mother board **ZB502** and the ZigBee module **Core2530**.

ZB502 Features

- Onboard battery holder, multi power supplies are available
- All the IOs are accessible for easy expansion

- Integrates CP2102 for debugging
- LEDs and user keys

What's on the ZB502



1. ZigBee module connector: for easily connecting ZigBee modules
2. I/Os interface
3. USB interface
4. UART/SPI interface
5. ONE-WIRE interface
6. Debugging interface

7. 5V/3.3V power input/output: usually used as power output, also common-grounding with other user board
 8. CP2102
 9. AMS1117-3.3
 10. Power switch
 11. Serial port RX/TX indicator
 12. Power indicator
 13. User LEDs
 14. User keys
 15. Reset button
 16. UART0 jumper
 17. LED jumper
 18. KEY jumper
-

Core2530 Features

- As easy to use as any UART modules
- Preloaded Bootloader, supports programming via UART directly without any debugger
- Provided firmware: Coordinator and/or Router(preloaded by default)
- Supports configuring via upper computer software
- Auto networking (at least 1 Coordinator and 1 Router are required)

Core2530 Specifications

- Onboard chip: CC2530F256RHAR
- Communication distance (open and wide operating environment):
 - Absolute maximum: over 350 meters
 - Stable communication: over 250 meters
 - Auto connecting: over 120 meters
- Frequency range: 2.4GHz
- Wide supply-voltage range (2 V–3.6 V)
- Operating temperature: -40°C ~ 85°C
- Serial port baud rate: 38400bps (default), different baud rates are available by software configuration
- Dimension: 26mm x 27mm (PCB)
- Expansion pinheader: all the I/Os
- Pinheader pitch: 2.54mm
- Spacing between pinheaders on the left side and the right side: 22.86mm (9x2.54mm)
- Antenna: 2.4G 2DB 360° omni-directional

CC2530F256RHAR Features

- Frequency range: 2.4GHz

- 16 transfer chains, software configurable according to environmental conditions
 - Radio baud rate up to 250kbps
 - High-Performance and Low-Power 8051 microcontroller core with code prefetch
 - 2.4-GHz IEEE 802.15.4 compliant RF transceiver
 - Wide supply-voltage range (2 V–3.6 V)
 - Watchdog timer, battery monitor, and temperature sensor
 - 12-Bit ADC with 8 channels and configurable resolution
 - 2 powerful USARTs with support for several serial protocols
 - IR generation circuitry
 - General-Purpose timers (One 16-Bit, Two 8-Bit)
 - AES security coprocessor
 - 21 General-Purpose I/O pins ($19 \times 4 \text{ mA}$, $2 \times 20 \text{ mA}$)
-